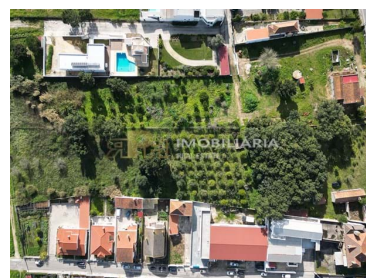




Santarém - Farmhouse



3 Bedrooms
1 Bathrooms
177 Area (m²)
9702 Land Area (m²)

N/A
CLASSE
ENERGÉTICA

259 000 €
(EUR €)

Farm - Urbanizable Rustic Land

Rustic land, currently with 2 buildings in a state of ruin.

The property is located in an area of medium constructive density, and it is possible to implant about 4000m².

The property has a tank and a well.

It also has some cork oaks.

Opportunity for investment with access to the national road and access to the A1.

It is located in the parish of the city of Santarém



Rita Pinto e Nuno Hilário

966617800 ²

geral@rph.pt

T 243 155 655 ¹ · T 966 617 800 ² · E geral@rph.pt
Av. Bernardo Santareno, Loja 29-B, 2005-177 Santarém
AMI 11994

¹ (Call to national fixed network) | ² (Call to national mobile network)



Property Features

- Energetic certification: Exempt



Rita Pinto e Nuno Hilário

966617800 ²

geral@rph.pt

T 243 155 655 ¹ · T 966 617 800 ² · E geral@rph.pt
Av. Bernardo Santareno, Loja 29-B, 2005-177 Santarém
AMI 11994

¹ (Call to national fixed network) | ² (Call to national mobile network)