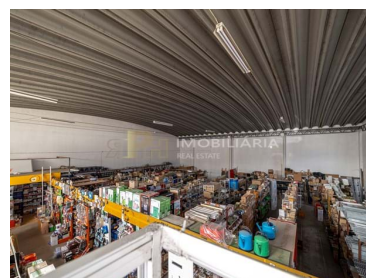




## Romeira e Várzea - Warehouse



2

Bathrooms



540,15

Area (m²)



286,1

Land Area (m²)

N/A

(EUR €)

## Warehouse for sale in the Industrial Zone

REF. ARM/0982

Warehouse with an implantation area of 521.65 m<sup>2</sup>, inserted in a plot of 807.75 m<sup>2</sup>.

It has a gross construction area of 544.70m<sup>2</sup>, with a gross private area of 526.2 m<sup>2</sup> and a dependent area of 18.5m<sup>2</sup>.

It has an office area and toilet facilities. Exterior with possibility of parking.

RPH - Real Estate - We make a difference!

With the start of activity in January 2016, we have a young, experienced, dynamic team with resolution capacity.

This team has more than 30 years of experience in the real estate market.



**Ana Sarmento**

Real estate consultant

966617800 <sup>2</sup>

anasarmento@rph.pt

**T 243 155 655 <sup>1</sup> · T 966 617 800 <sup>2</sup> · E geral@rph.pt**  
**Av. Bernardo Santareno, Loja 29-B, 2005-177 Santarém**  
**AMI 11994**

<sup>1</sup> (Call to national fixed network) | <sup>2</sup> (Call to national mobile network)



To help our clients, we offer a wide range of solutions ranging from mediation, surveying, consulting, projects, refurbishments, etc.

We have qualified technical staff, as well as several partners recognized for their professional paths.

We're here for you!

AMI 11994

All information presented on this page is the sole responsibility of our Agency.  
They must be considered correct, but do not exclude the need for verification.  
This information is not binding.

## Property Features

- Proximity: Shopping, Restaurants, City, Open field, Hospital, Pharmacy, Public Transport, Schools, Public Swimming Pools, Playground
- Floors: 2
- Main drainage
- Mains water
- Built year: 2019
- Views: Urbanization view
- Telephone



**Ana Sarmento**

Real estate consultant

966617800 <sup>2</sup>

anasarmiento@rph.pt

**T 243 155 655 <sup>1</sup> · T 966 617 800 <sup>2</sup> · E geral@rph.pt**  
**Av. Bernardo Santareno, Loja 29-B, 2005-177 Santarém**  
**AMI 11994**

<sup>1</sup> (Call to national fixed network) | <sup>2</sup> (Call to national mobile network)