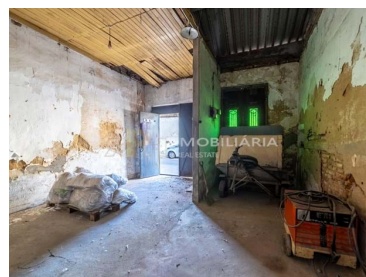
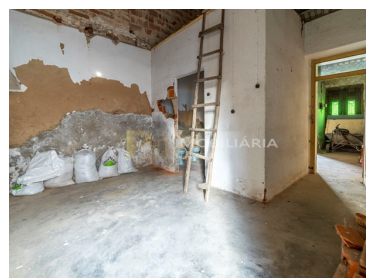




Almeirim - Villa



Bedrooms



Bathrooms



Area (m²)



Land Area (m²)

57 500 €

(EUR €)

House for reconstruction, Almeirim

REF^a MOR/0941

House for reconstruction, gross construction area 67 m²

Land with 227 m²

RPH - Real Estate - We make a difference!

Starting in January 2016, we have a young, experienced, dynamic team with resolution capacity. This team has more than 30 years of experience in the real estate market.

To help our clients, we offer a wide range of solutions ranging from mediation, surveying, consulting, projects, refurbishments, etc.



Rita Pinto e Nuno Hilário

966617800 ²

geral@rph.pt

T 243 155 655 ¹ · T 966 617 800 ² · E geral@rph.pt
Av. Bernardo Santareno, Loja 29-B, 2005-177 Santarém
AMI 11994

¹ (Call to national fixed network) | ² (Call to national mobile network)



We have qualified technical staff, as well as several partners recognized for their professional paths.

We're here for you!

AMI 11994

All information presented on this page is the sole responsibility of our Agency.
They must be regarded as correct, but do not exclude the need for verification.
This information is not binding.

Property Features

- Built year: 1937
- Views: Urbanization view
- Quiet Location
- Mains water
- Floors: 1
- Main drainage
- Energetic certification: Exempt



Rita Pinto e Nuno Hilário

966617800 ²

geral@rph.pt

T 243 155 655 ¹ · T 966 617 800 ² · E geral@rph.pt
Av. Bernardo Santareno, Loja 29-B, 2005-177 Santarém
AMI 11994

¹ (Call to national fixed network) | ² (Call to national mobile network)